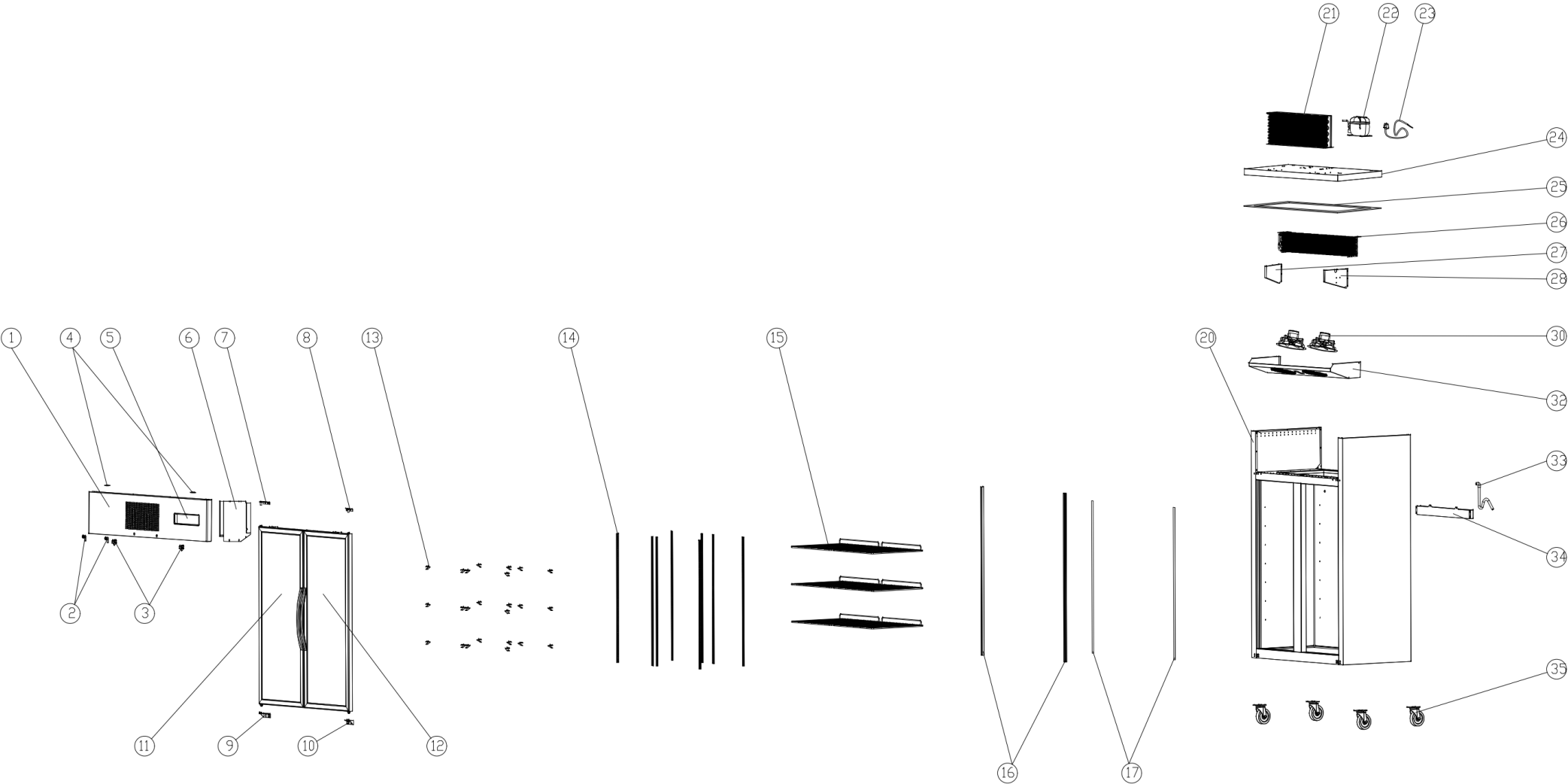


SUCG1000 EXPLODED DIAGRAM



FHE After Sales Service & Support (AU)
 Phone: 1300887055
 Spares Email: spares@fedservices.com.au

FHE After Sales Service & Support (NZ)
 Phone: 09 415 6471
 Service Email: service@fedproducts.co.nz

SUCG1000 PARTS LIST

Item	FHE Part Code	Description	Qty	Remark
1	SUFG1000-TSSP-X	Top Panel	1	
2	SUC/SUF-Key	Key & Lock Assembly	2	
3*	SUCG1000-FS	Fan Switch	2	
4	SUCG1000-TCH	Top Cover Hinge	2	
5	SUCG1000-TCPP	Temperature Control Protection Panel	1	
6*	SUC-SUF-TCK	Touch Controller Kit	1	
7*	SUCG1500-TLDH-X	Top Left Door Hinge	1	
8*	SUCG1500-TRDH-X	Top Right Door Hinge	1	
9*	SUCG1500-BLDH-X	Bottom Left Door Hinge	1	
10*	SUCG1500-BRDH-X	Bottom Right Door Hinge	1	
11*	SUCG1000-LD-X	Left Glass Door	1	
12*	SUCG1000-RD-X	Right Glass Door	1	
13	SUF600-20	Shelf K Clip	24	
14	SUCG1000-KSS	K-type Seal Strip	8	
15*	SUF10A4.00-01	Wire Shelf 530mm X 530mm	6	
16*	SUCG1000-LSB	Lamp Shade Base	2	

FHE After Sales Service & Support (AU)
 Phone: 1300887055
 Spares Email: spares@fedservices.com.au

FHE After Sales Service & Support (NZ)
 Phone: 09 415 6471
 Service Email: service@fedproducts.co.nz

SUCG1000 PARTS LIST

Item	FHE Part Code	Description	Qty	Remark
17	SUCG1000-LTS	Light Transmitting Sheet	2	
20		Cabinet Body	1	
21*	SUCG1000-COND	Condenser	1	
22*	SC15MFX	Compressor R134A	1	
23	SUCG1000-PC	Power Cord	1	
24	SUCG1000-LCP	Lower Cover Plate	1	
25	SUCG1000-PEIC	PE Insulation Cotton	1	
26*	SUF1000-40	Evaporator 5R6K680L	1	
27	SUCG1000-LEB	Left Evaporator Baffle	1	
28	SUCG1000-REB	Right Evaporator Baffle	1	
30*	SUCG1000-EFMA	Evaporator Fan Motor Assembly	2	
32	SUCG1000-EFC	Evaporator Fan Cover	1	
33	SUCG1000-DP	Drain Pipe	1	
34	SUCG1000-EWT	Water Tray For Evaporator	1	
35	SUF1000-NC-X	Normal Castor	4	
	SUF1000-BC-X	Brake Castor	4	

SUCG1000 PARTS LIST

Item	FHE Part Code	Description	Qty	Remark
	SUF1000-PH	Pan/Drain Heater		
	Drier-1	DRIER LIQUID LINE DML032S 1/4 SOLDER		
	SUCG1000-DG-X	Door Gasket		
	SUCG1000-CFM	Condenser Fan Motor		
	SG-SL-LT-98W	LED Light Transformer New Version 7A 98W		

*Wearable parts