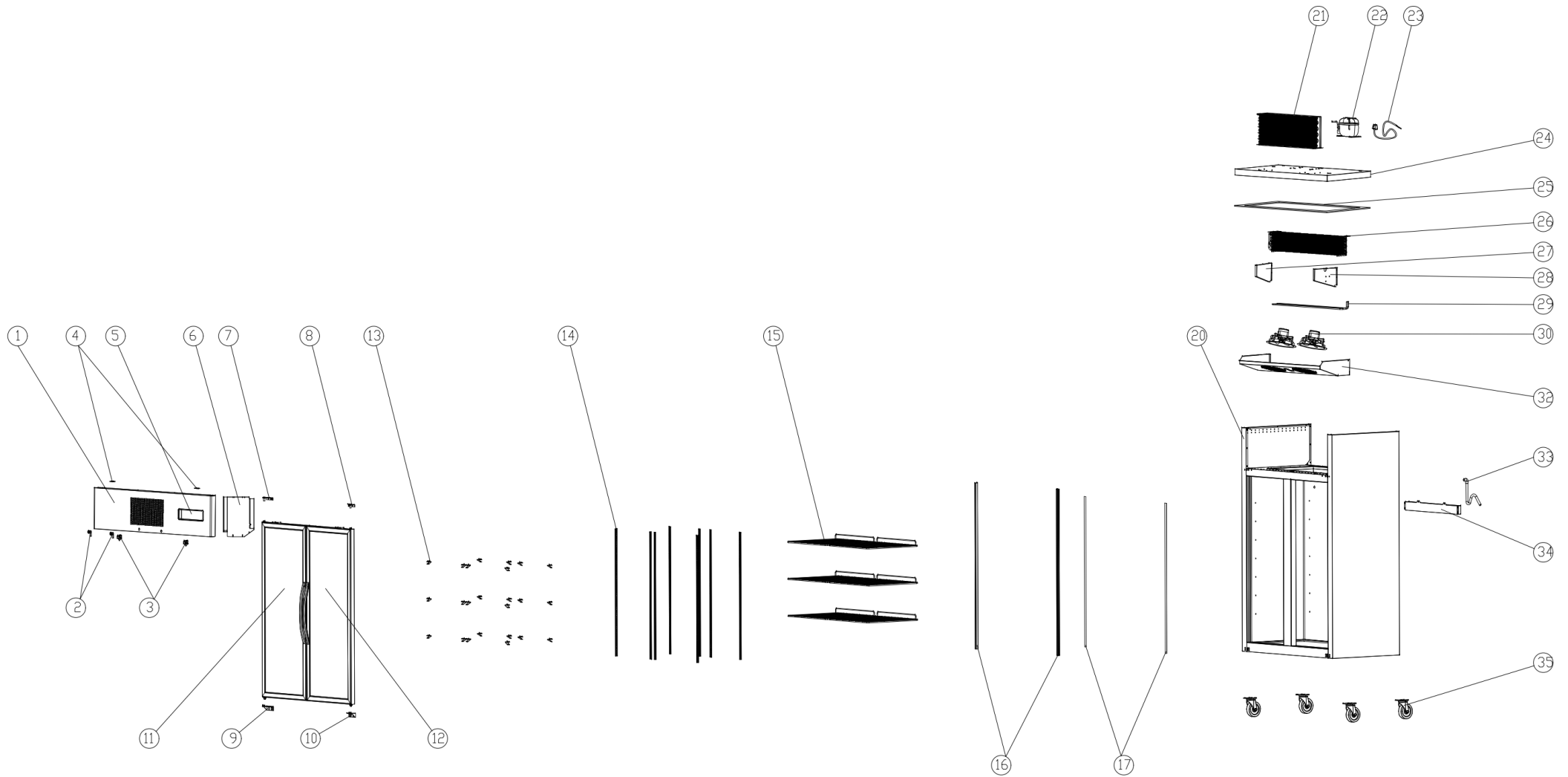


# SUFG1000B EXPLODED DIAGRAM




FHE After Sales Service & Support (AU)  
Phone: 1300887055  
Spares Email: [spares@fedservices.com.au](mailto:spares@fedservices.com.au)

FHE After Sales Service & Support (NZ)  
Phone: 09 415 6471  
Service Email: [service@fedproducts.co.nz](mailto:service@fedproducts.co.nz)

# SUFG1000B PARTS LIST

Item	FHE Part Code	Description	Qty	Remark
1	SUFG1000B-TSSP	Top Stainless Steel Panel	1	
2	SUC/SUF-Key	Key & Lock Assembly	2	
3*	SUFG1000-FS	Fan Switch	2	
4	SUFG1000-TCH	Top Cover Hinge	2	
5	SUFG1000-TCPP	Temperature Control Protection Panel	1	
6*	SUC-SUF-TCK	Touch Controller Kit	1	
7*	SUCG1500-TLDH-X	Top Left Door Hinge	1	
8*	SUCG1500-TRDH-X	Top Right Door Hinge	1	
9*	SUCG1500-BLDH-X	Bottom Left Door Hinge	1	
10*	SUCG1500-BRDH-X	Bottom Right Door Hinge	1	
11*	SUFG1000B-LD-X	Left Glass Door	1	
12*	SUFG1000B-RD-X	Right Glass Door	1	
13	SUF600-20	Shelf K Clip	24	
14	SUCG1000-KSS	K-type Seal Strip	8	
15*	SUFG1000-2	Wire Shelf 530mm X 530mm	6	
16*	SUFG1000-20	LED Light Strip	2	

# SUFG1000B PARTS LIST

Item	FHE Part Code	Description	Qty	Remark
17	SUFG1000-Light cover	Light Cover L=1374MM	2	
20		Cabinet Body	1	
21*	SUFG1000-Condenser	Condenser	1	
22*	Version1 NT2192GK	Compressor R404a	1	
22*	Verison2 SC21CL	Compressor R404a		
23	SUFG1000-PC	Power Cord	1	
24	SUFG1000-LCP	Lower Cover Plate	1	
25	SUFG1000-PEIC	PE Insulation Cotton	1	
26*	SUF1000-40	Evaporator 5R6K680L	1	
27	SUFG1000-LEB	Left Evaporator Baffle	1	
28	SUFG1000-REB	Right Evaporator Baffle	1	
29	SUF1000-41	Defrost Heating Tube	1	
30*	SUFG1000-EFMA	Evaporator Fan Motor Assembly	2	
32	SUFG1000-EFC	Evaporator Fan Cover	1	
33	SUFG1000-DP	Drain Pipe	1	
34	SUFG1000-EWT	Evaporator Water Tray	1	

# SUFG1000B PARTS LIST

Item	FHE Part Code	Description	Qty	Remark
35	SUF1000-NC-X	Normal Castor	4	
	SUF1000-BC-X	Brake Castor	4	
	SUF1000-PH	Pan/Drain Heater		
	Drier-1	DRIER LIQUID LINE DML032S 1/4 SOLDER		
	SUCG1000-DG-X	Door Gasket		
	SUFG1000-CFM	Condenser Fan Motor		
	SUFG1000-20A	LED Transformer		

\*Wearable parts