

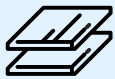
# Flat Glass Salad Bench Tops

## XVRX Range

XVRX1200/380  
XVRX1500/380  
XVRX1800/380  
XVRX2000/380

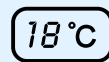


## KEY FEATURES



### Premium Stainless Steel Build with Glass Enclosure

Hygienic, durable, easy to clean and Crystal-clear visibility, ideal for high-use food prep areas.



### Precise Digital Temperature Control

Dixell controller for accurate, reliable temperature management.



### Flexible Pan Layout

Angled pan positions for easy ingredient access and presentation.



### Durable Cooling Components

High-performance compressor and heavy-duty condenser fans for consistent performance.)

## DETAILS

The XVRX Series Flat Salad Bench Top range delivers a practical and professional solution for chilled ingredient storage and display. Built from high-grade stainless steel with angled GN pan positions, these units make it easy for chefs to access ingredients while maintaining optimal food safety standards. The digital temperature controller provides precise management, while a high performance compressor and heavy-duty condenser fans ensure dependable cooling performance during peak service hours.

Available with a toughened glass canopy, the XVRX Series offers flexibility for both front- and back-of-house operations. Pan dividers help organise ingredients efficiently, while the 150mm maximum pan depth supports a wide variety of menu items. Durable, efficient, and easy to clean, these bench tops are a must-have for any busy kitchen or salad service station.



## Maximum Pan Depth

150mm – Accommodates deep pans for versatile ingredient storage.



## Natural Refrigerant

Eco-friendly refrigerant choice.



## Toughened Glass Canopy Available

Clear, strong, and resistant to daily wear on glass models.



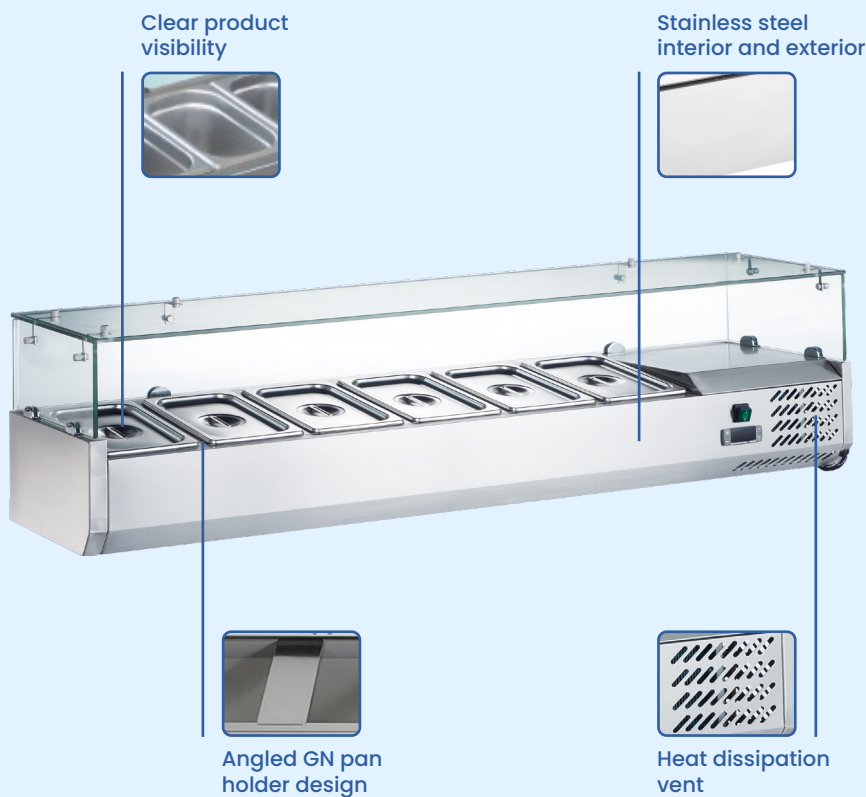
## Pan Divider Included

Organises storage for streamlined service.



## Supports multiple 1/3 Pan

Allows customisation of your set-up.

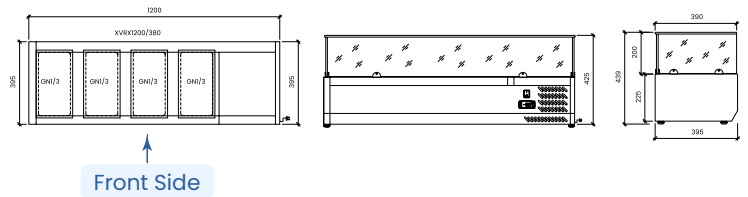


# XVRX SERIES

Flat Salad Bench Tops

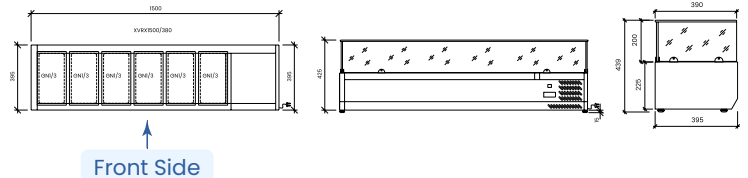


XVRX1200/380



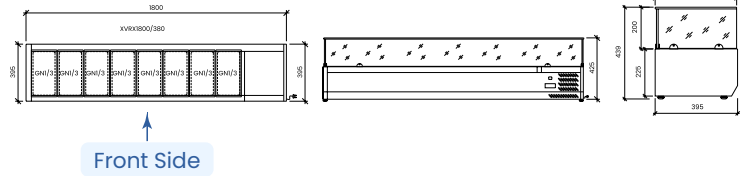
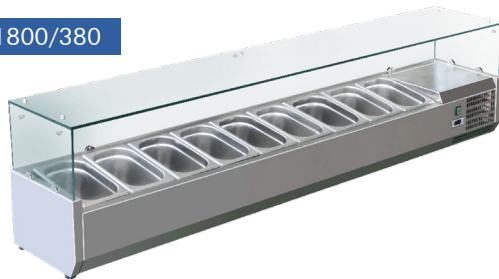
Front Side

XVRX1500/380



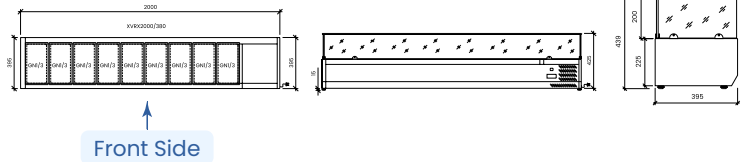
Front Side

XVRX1800/380



Front Side

XVRX2000/380



Front Side

## SPECIFICATION CHART

\*Pans not included

Code	Pans	Dimensions (WxDxH mm)	Weight (kg)	Temperature Range °C	Ambient/RH% (°C)	Voltage (V)	Power (W/A)
XVRX1200/380	4 x 1/3	1200x395x439	40.5	+2 to +8	32/60	240	110/10
XVRX1500/380	6 x 1/3	1500x395x439	48	+2 to +8	32/60	240	110/10
XVRX1800/380	8 x 1/3	1800x395x439	50.5	+2 to +8	32/60	240	110/10
XVRX2000/380	9 x 1/3	2000x395x439	60	+2 to +8	32/60	240	110/10

\*Pans covers must be used to ensure correct operating temperature.

To ensure we continuously offer the best possible products, we reserve the right to modify specifications without any obligation for equipment previously or subsequently sold



AUS Phone: 1300 659 409  
Email: [sales@foodequipment.com.au](mailto:sales@foodequipment.com.au)  
[www.foodequipment.com.au](http://www.foodequipment.com.au)



NZ Phone: 09 415 6470  
Email: [sales@fedproducts.co.nz](mailto:sales@fedproducts.co.nz)  
[www.fedproducts.co.nz](http://www.fedproducts.co.nz)

# Flat Glass Salad Bench Tops

## XVRX Range

XVRX1200/380 XVRX1500/380

XVRX1800/380 XVRX2000/380

