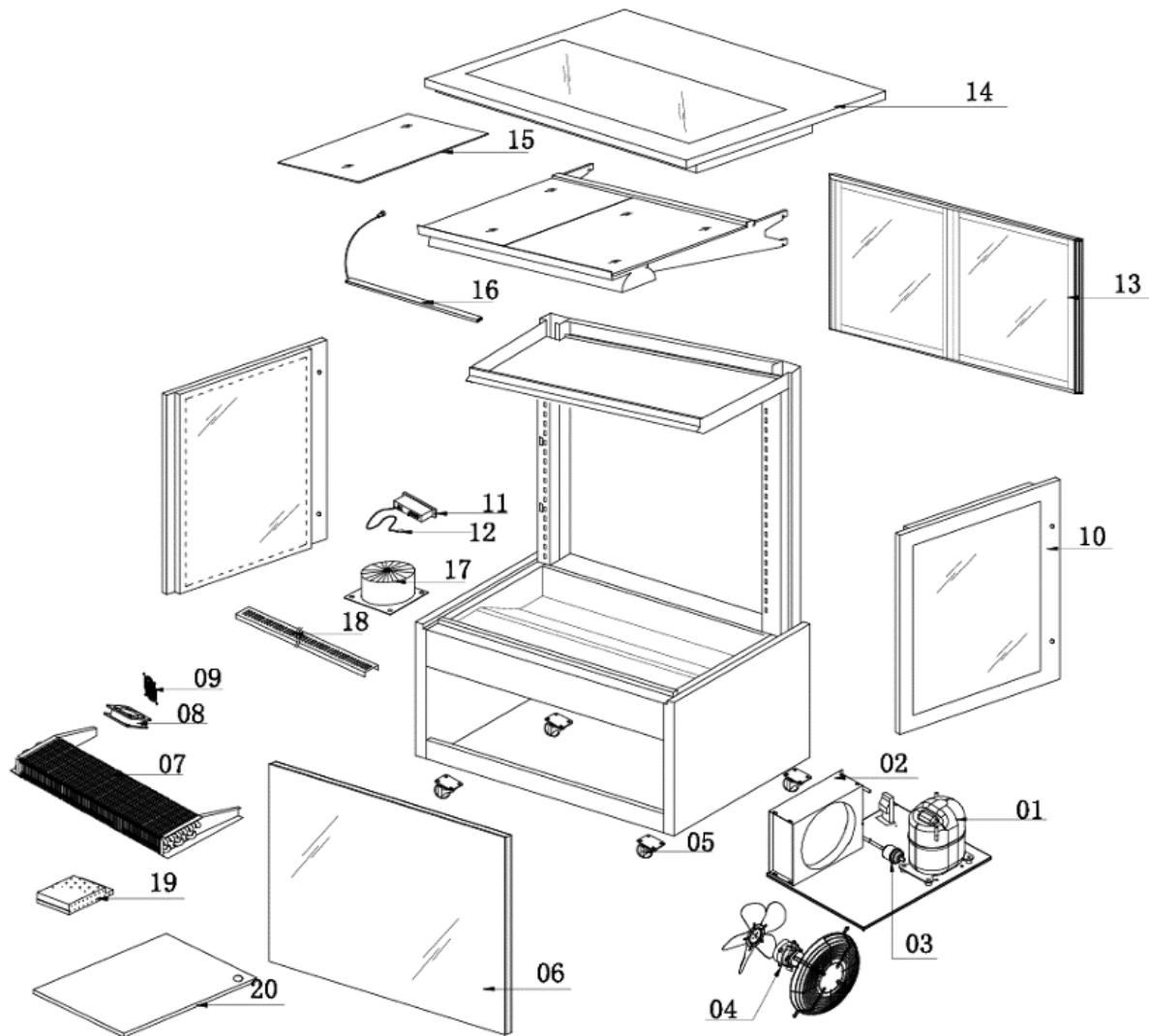


# SL830V EXPLODED DIAGRAM



# SL830V PARTS LIST

Item	FHE Part Code	Description	Qty	Remark
1*	SC15MFX	Compressor R134A	1	
2*	SL830V-7	Condenser 3mm X 8mm X 500mm	1	Same as SLP840C-8
3*	Drier-1	Filter Drier DML032S	1	
4*	SL830V-CM	Condenser Motor 31W	2	
5	Version 1 SLP830C-13	Normal Castor 2 Inch	4	
5	Version 2 SLP830C-14	Brake Castor 2 Inch	4	
6*	SL830V-1	Front Square Glass 828mm X 851mm	1	
7*	SL830V-6	Evaporator 6mm X 4mm X 570mm	1	
8*	Version 1 FAN-120X120MM	Metal Body Plastic Blade Fan EBM9656/B02 120mm X 120mm X 38mm	2	
8*	Version 2 FAN-04	Metal Body Plastic Blade Square Fan 120mm X 120mm X 38mm	2	
9	SL830V-FC	Fan Cover 120mm X 120mm	2	
10*	Left SL830V-2	Left Side Glass 720mm X 858mm	1	
10*	Right SL830V-2A	Right Side Glass 720mm X 858mm	1	
11*	Version 1 TEMP CONT SF-212	Temperature Controller SF-212	1	2019 Version
11*	Version 2 TC-SF-172E	Temperature Controller SF-172E	1	2024 Version
12	SL830V-PW	Wire of Probe Black/White	1	
13	SL830V-4	Rear Sliding Door 360mm W X 787mm H	2	
14*	SL830V-3	Top Glass 875mm X 730mm	1	

# SL830V PARTS LIST

Item	FHE Part Code	Description	Qty	Remark	
15*	SL830V-14	Black Glass Shelf 373mm X 350mm	6		
16*	COLD	SG090FA-LED 1	LED Light Cool White 585mm	4	
16*	WARM	SG090FA-LED	LED Light Warm White 585mm		
17*	SL830V-CTT	Cylindrical Type Transformer 200W 30V	1		
18	SL830V-SSADP	Stainless Steel Air Duct Plate 720mm X 77mm	2		
19*	SG-SL-LT-60W	LED Light Transformer 60W 12V 5A	1		
20	H-SL830-bottom panel	Bottom Panel Set 394mm X 360mm	2		
	SL830V-SSN	Shelf Screw And Nut			
	BPT-Side	Black Plastic Trim Left/Right Side 1 pcs			
	Plug-Socket-Set	Light Plug and Socket Set			
	SC15G-Relay	Relay 117U6005			
	SGBP090FA-2XB-MWR	Middle Level Wire Rack 373mm X 350mm			
	SL830V-4A	Door Guide/track			
	SL830V-8	Front Panel No Holes			
	SL830V-RBP	Rear Bottom Panel			
	TBPT-900mm	Top Black Plastic Trim Suit 900mm Long Machine			

\*Wearable parts

FHE After Sales Service & Support (AU)  
 Phone: 1300887055  
 Spares Email: [spares@fedservices.com.au](mailto:spares@fedservices.com.au)

FHE After Sales Service & Support (NZ)  
 Phone: 09 415 6471  
 Service Email: [service@fedproducts.co.nz](mailto:service@fedproducts.co.nz)