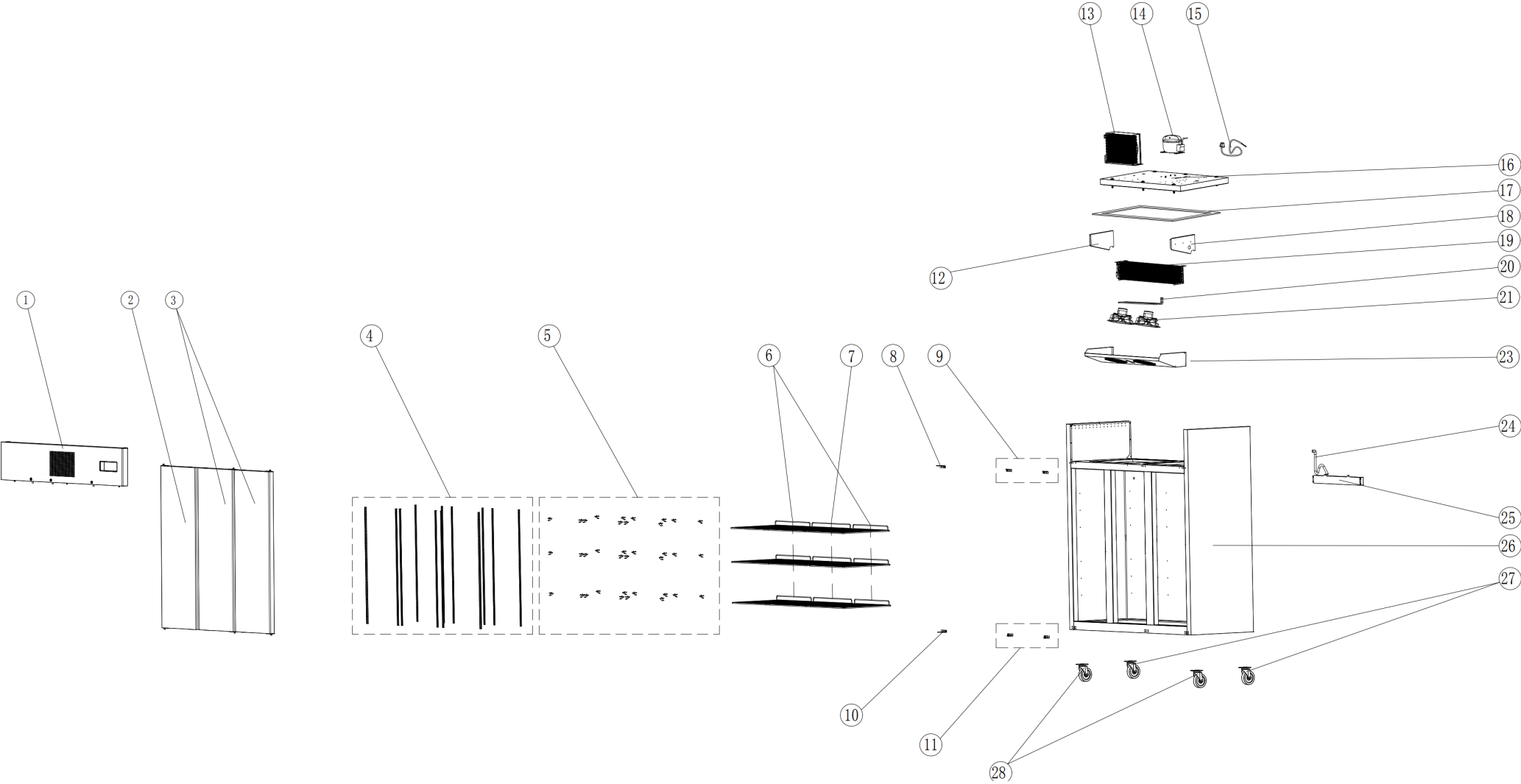


SUC1500 EXPLODED DIAGRAM




FHE After Sales Service & Support (AU)
Phone: 1300887055
Spares Email: spares@fedservices.com.au

FHE After Sales Service & Support (NZ)
Phone: 09 415 6471
Service Email: service@fedproducts.co.nz

SUC1500 PARTS LIST

Item	FHE Part Code	Description	Qty	Remark
1	SUF1500-TSSP-X	Top Stainless Steel Panel XY Version	1	
2	SUF1500-LD-X	Left Door Assembly	1	
3	SUF1500-RD-X	Right Door Assembly	2	
4	SUC1500-KSS	K-type Seal Strip	12	
5	SUF600-20	K-type Clip	36	
6*	SUF10A4.00-01	Wire Shelf 530mm X 530mm	6	
7*	SUC1500-WS	Wire Shelf 615mm X 530mm	3	
8*	SUC1000-TLDH-X	Top Left Door Hinge	1	
9*	SUC1000-TRDH-X	Top Right Door Hinge	2	
10*	SUC1000-BLDH-X	Bottom Left Door Hinge	1	
11*	SUC1000-BRDH-X	Bottom Right Door Hinge	2	
12	SUC1500-LEB	Left Evaporator Baffle	1	
13*	SUC1500-Condenser-X	Condenser	1	
14*	SC10MLX	Compressor R404a	1	
15	SUC1500-PC	Power Cord	1	
16	SUC1500-LCP	Lower Cover Plate	1	

SUC1500 PARTS LIST

Item	FHE Part Code	Description	Qty	Remark
17	SUC1500-PEIC	PE Insulation Cotton	1	
18	SUC1500-REB	Right Evaporator Baffle	1	
19*	SUC1500-Evap-X	Evaporator	1	
20*	SUF1000-41	Defrost Heating Tube	1	
21*	SUC1500-EFM	Evaporator Fan Motor	2	
23	SUC1500-EFC	Evaporator Fan Cover	1	
24	SUC1500-DP	Drain Pile	1	
25	SUC1500-EWT	Water Tray For Evaporator	1	
26		Cabinet Body	1	
27	SUF1000-NC-X	Normal Castor	2	
28	SUF1000-BC-X	Brake Castor	2	
	SUF1500-DG-X	Door Gasket		
	Drier-1	DRIER LIQUID LINE DML032S 1/4 SOLDER		
	SUC-SUF-TCK	Touch Controller Kit for all SLIS machines		
	SUF1000-PH	Pan/Drain Heater		
	SUC1500-CFM	Condenser Fan Motor		

SUC1500 PARTS LIST

*Wearable parts

FHE After Sales Service & Support (AU)
Phone: 1300887055
Spares Email: spares@fedservices.com.au

FHE After Sales Service & Support (NZ)
Phone: 09 415 6471
Service Email: service@fedproducts.co.nz