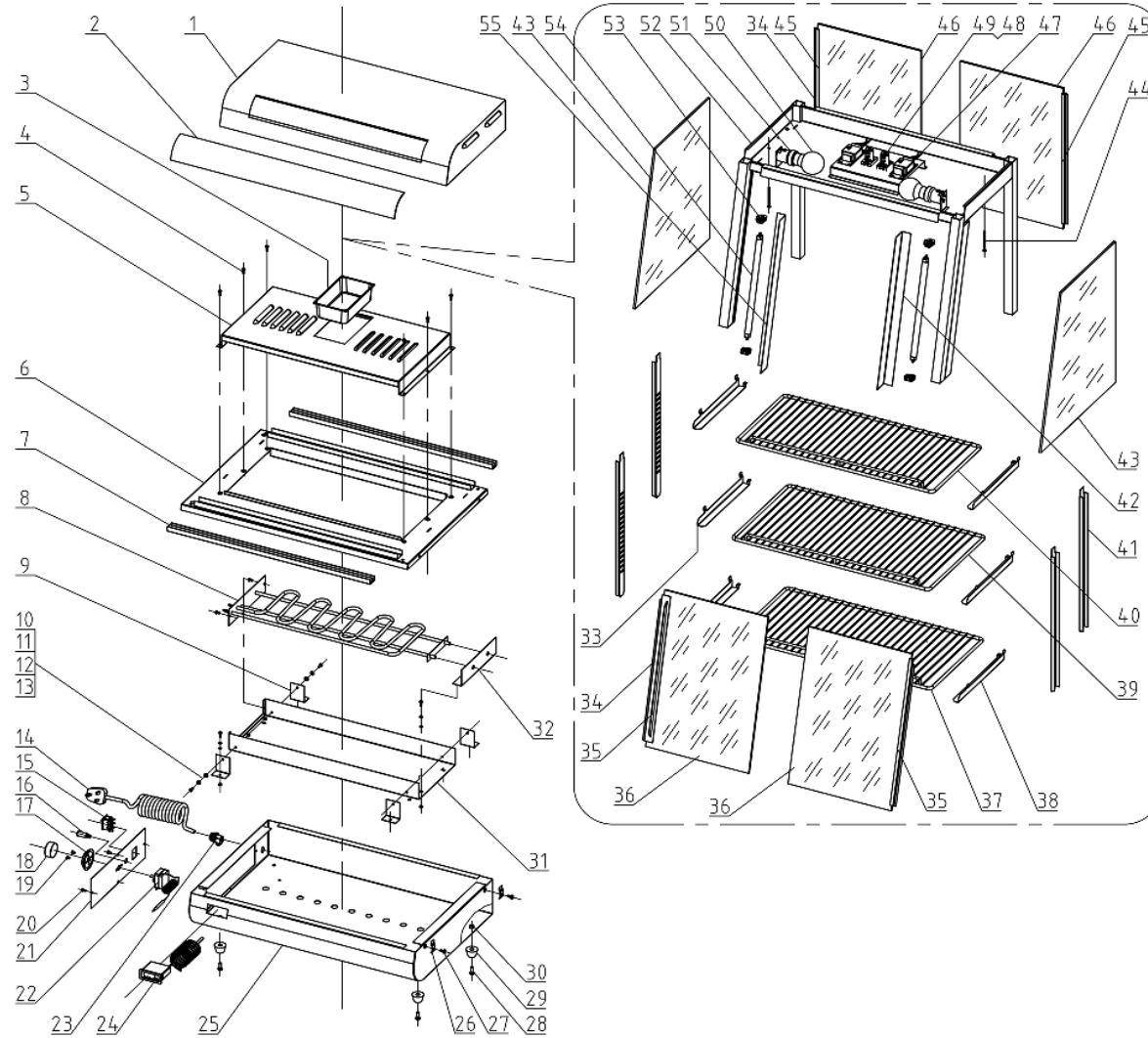


PW-RT-900-1E EXPLODED DIAGRAM



PW-RT-900-1E PARTS LIST

Item	FHE Part Code	Description	Qty	Remark
1	803001001001	Top Plate Assembly	1	
2	70201001064	Decorative Lamp Cover 89mm	1	
3*	302120034	Oil / water Tray 156mm X 92mm 70201200346	1	
4	70202102928	Fixation Screw for Heater Cover Plate M5 X 16mm	6	
5	802001001024	Heater Cover Plate	1	
6	801001001004	Bottom Plate Assembly	1	
7*	302070062	Door Track 823mm 70200700628	2	
8*	PW-RT/900-35	Electric Heating Tube New Type 301040165/70100401655	1	
9	802001001027	Upholder for Heater Supporting Plate	4	
10	70202102764	Screw M4 X 12mm	10	
11	70202126955	Flat Washer M4	10	
12	70202127791	Spring Washer M4	10	
13	70202100482	Nut M4	10	
14	70100500164	Power Word	1	
15*	PW-RT/660-17	DOUBLE POWER SWITCH 301080009/70100800091	1	
16*	301130005	Yellow Indicator Lamp LBX14-220V 70101300055	1	
17*	301110011	Knob plate 30-110°C Ø 58 Black 70101100119	1	
18*	70101100464	Thermostat Knob Ø 40.5mm	1	

FHE After Sales Service & Support (AU)
 Phone: 1300887055
 Spares Email: spares@fedservices.com.au

FHE After Sales Service & Support (NZ)
 Phone: 09 415 6471
 Service Email: service@fedproducts.co.nz

PW-RT-900-1E PARTS LIST

Item	FHE Part Code	Description	Qty	Remark
19	70202102737	Nut M4 X 6mm	2	
20	70202116473	Screw M4 X 12mm	4	
21	802001002020	Control Panel	1	
22*	70100302164L	Thermostat 85°C	1	
23	70100700782	Power Cord Jacket	1	
24*	PW-RT/660-31	20-110°C Temp Illustrator/Thermometer 301020034/70100200346	1	
25		Rear Bottom Plate Assembly	1	
26	802001001014	Side Glass Fixation Plate	4	
27	70202107137	Bolt M5 X 10mm	4	
28	DE-1-1	Screw M6 X 20mm 302212624/70202126246	4	
29	AT936-19	Rubber Foot 302090027/70200900273	4	
30	70202100055	Nut M6	4	
31	802001001026	Heater Supporting Plate	1	
32	802001001028	Heater Installation late	1	
33	802001001018	Left Shelf Supporting Plate	3	
34*	302020318	Seal for PW-RT for glass sliding doors/ sold by meter 70200203182	1.6	Assembly see code PW-RT/900/1E-CSD
35*	302070017	Handle For Front Door Glass 70200700173	2	Assembly see code PW-RT/900/1E-CSD
36*	PW-RT/900-1	Front Glass Door 400mm X 417mm 70201000700	2	Assembly see code PW-RT/900/1E-CSD

FHE After Sales Service & Support (AU)
 Phone: 1300887055
 Spares Email: spares@fedservices.com.au

FHE After Sales Service & Support (NZ)
 Phone: 09 415 6471
 Service Email: service@fedproducts.co.nz

PW-RT-900-1E PARTS LIST

Item	FHE Part Code	Description	Qty	Remark
37*	PW-RT/900-34	Bottom Rack 819mm X 360mm 302110080/70201100800	1	
38	802001001019	Right Shelf Supporting Plate	3	
39*	70201100791	Middle Rack 819mm X 340mm 302110079/70201100791	1	
40*	70201100782	Top Rack 819mm X 316mm 302110078/70201100782	1	
41	20201001017	Support Upright 802001001017	4	
42	70200701055	Right Chamber Light Holder	1	
43*	302100069	Side Glass 362mm X 455mm X 396mm 70201000691	2	
44	70202103800	Screw M5 X 60mm	2	
45*	302070017	Handle For Back Door Glass 70200700173	2	Assembly see code PW-RT/900/1E-CSD
46*	PW-RT/900-1	Back Glass Door 400mm X 417mm 70201000700	2	Assembly see code PW-RT/900/1E-CSD
47*	70101000155	Ballast	2	
48*	70101300555	Starter	2	
49	70101300564	Starter Holder	2	
50*	70101300400	Lamp 220V 15W	2	
51	YXD-266-19	Light Holder 301130035/70101300355	2	
52		Main Shelf Assembly	1	
53	70101300528	Fluro Tube Fitting	4	
54*	PW-RT/660-23	Fluro Tube 8W 300mm 301130041/70101300419	2	

FHE After Sales Service & Support (AU)
 Phone: 1300887055
 Spares Email: spares@fedservices.com.au

FHE After Sales Service & Support (NZ)
 Phone: 09 415 6471
 Service Email: service@fedproducts.co.nz

PW-RT-900-1E PARTS LIST

Item	FHE Part Code	Description	Qty	Remark
55	70200700591	Left Chamber Light Holder	1	
	PW-RT/900/1E-CSD	Complete Sliding Door 70201000700+70200700173+70200203182		Included in Item 34-36&45-46
	EF-Temperature Knob	Temperature Knob for 301110028		

*Wearable parts